



Acrystal Prima

Highlight

- ▶ A white composite material with two components:
 - an aqueous acrylic liquid resin "Acrystal Prima"
 - a powder "Basic Crystal" of natural mineral crystal structures
- ▶ Can be used internally
- ▶ Can be used externally with a protective film
- ▶ Mineral or metallic aggregates can be added
- ▶ Can be applied directly to foams such as polystyrene
- ▶ Machinable
- ▶ Can be used for casting, rotomoulding, laminating or spraying

Advantages

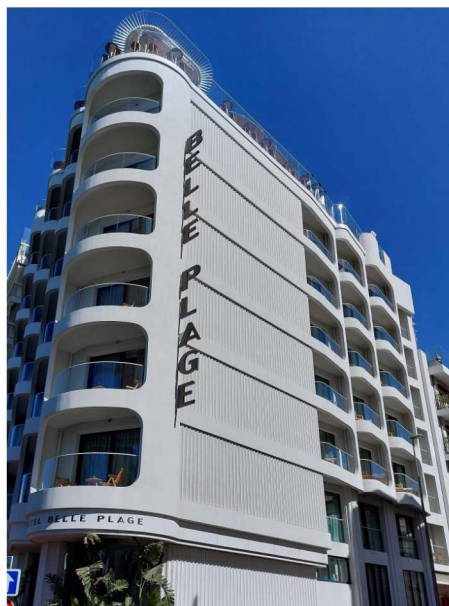
- ▶ **During application**
 - non toxic
 - low odour
 - easy to work with
 - aqueous, solvent free
 - no mould cleaning
 - tools cleaned with water
 - low exotherm (< 45°C)
- ▶ **Aspect**
 - infinite range of finishes
 - high quality finish
 - homogenous colouration
- ▶ **High performances**
 - low expansion at setting (< 0,1%)
 - moisture resistance
 - fire resistance
 - durable
- ▶ **Economical**
 - less working time
 - increases life-time of silicone moulds
 - no solvents for cleaning
 - few consumables

Product references

- ▶ Kit Acrystal Prima 14 kg : 1514
- ▶ Kit Acrystal Prima 70 kg : 1570
- ▶ Kit Acrystal Prima 3500 kg : 1599

Applications

- ▶ Architecture
- ▶ Interior design
- ▶ Replicas
- ▶ Scale models
- ▶ Scenography
- ▶ Museography
- ▶ Art & artwork
- ▶ Models
- ▶ Moulds
- ▶ Mould cases
- ▶ Prototypes



Facade of the Belle Plage Hotel in Cannes - Corrugated panels imitating rubbed plaster - Planet Staff - Cagnes sur Mer - Atelier Jean-Loup Bouvier - Les Angles

Complementary products

- ▶ Pigments 1 kg : 4111 à 4114
- ▶ Glass fibres 200-4D : 6260 / 6280
- ▶ Acrystal Finition 5 kg : 3310
- ▶ Retardater 1 kg : 3110
- ▶ Thixotrope 1 kg : 3210
- ▶ Aluminium wisk : 5110

For more details about this products : www.acrystal.com > products

Processing

- ▶ Mixing ratio by weight :
 - ▷ 1 part Acrystal Prima liquids
 - ▷ 2,5 parts Basic Crystal powders
- ▶ Blend Basic Crystal powder in Acrystal Prima liquids
- ▶ According to the application :
 - extract air by usual techniques and cast into silicone rubber moulds
 - laminate with a wiper or a brush using fibres for reinforcement
 - spray material with an adapted spray gun
- ▶ For an external use, apply Acrystal Finition, a paint or a varnish on your finished product.

For more details about processing : www.acrystal.com > products > users guide



Bas-relief sculpture of the stairwell of the historic Lanvin Boutique in Paris - Created by Frédérique Whittle - Montreuil

Technical data (indicative figures)

Fresh wet density (unfilled)	1850 kg / m ³
Air dry density (unfilled)	1730 kg / m ³
Pot life	8 – 10 mn
Final set (demould)	20 – 100 mn
Compressive strength	25 – 30 MPa oven drying
Fire rating	M1 (F); B1 (D); IMO (International)
Maximal bending strength	18 MPa
Expansion at setting	< 0.1 %
Shore D hardness	81 - 83
U.V. resistance	excellent

All information contained in this data sheet is given in good faith. However, it remains all times the responsibility of the customer to ensure that the materials are suitable for the particular purpose intended.

Acrystal®

Made in France

67460 Souffelweyersheim

+33 (0)3 88 45 10 62 - web.acrystal@orange.fr

www.acrystal.com